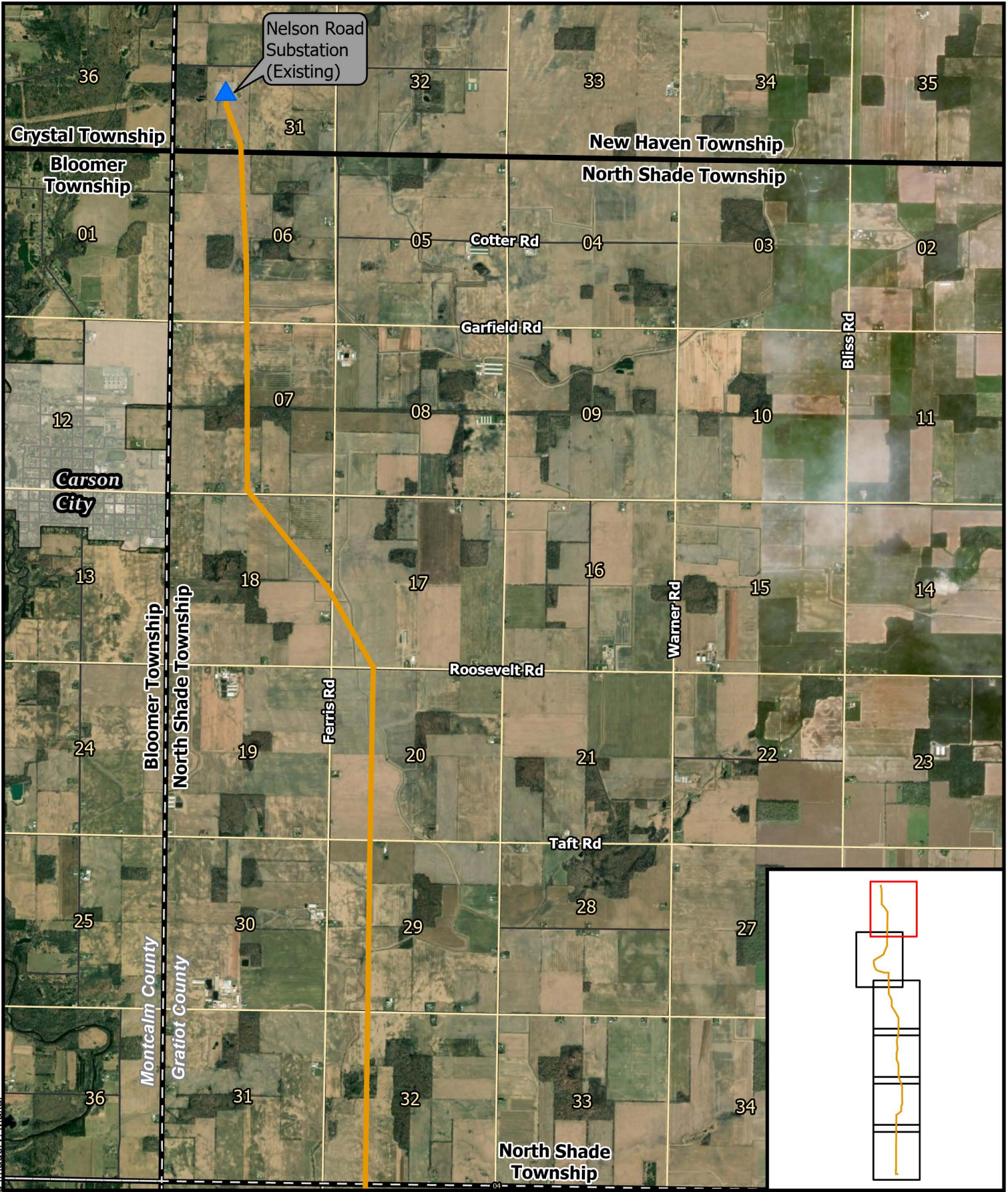
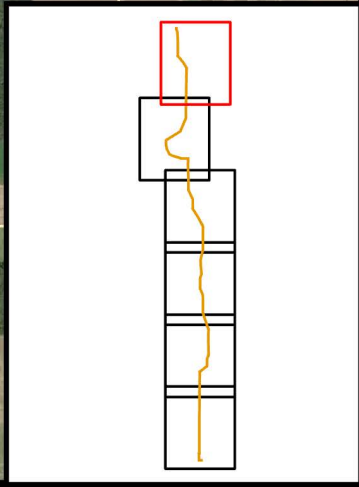


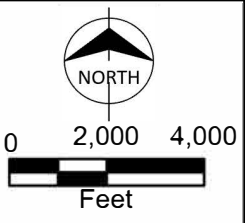
Path: C:\Users\giruff\OneDrive - Burns & McDonnell\Documents\ArcGIS\Projects\NelsonRd_Oneida_Figures_08032023_package_ff8335\p30\NelsonRd_Oneida_Figures_08032023.aprx giruff 8/9/2023
 Service Layer Credits: World Imagery, Maxar



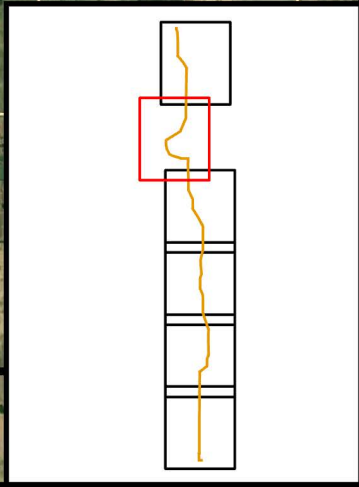
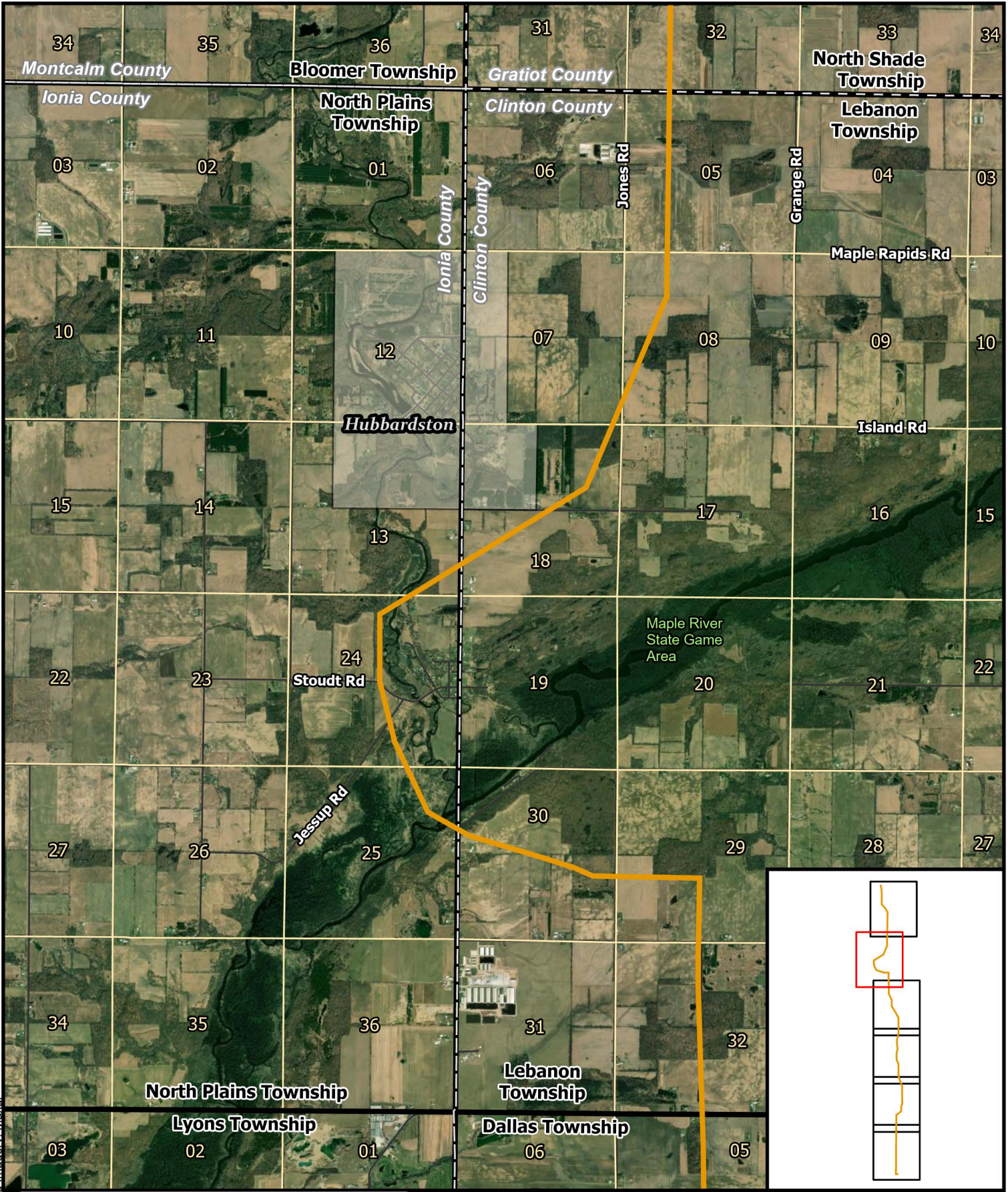
Nelson Road Substation (Existing)



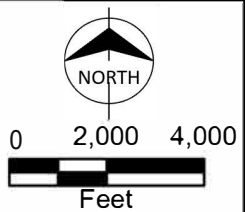
- Substation
- Alternate Route
- County
- Township Boundary
- Township Section Boundary
- Municipal Boundary



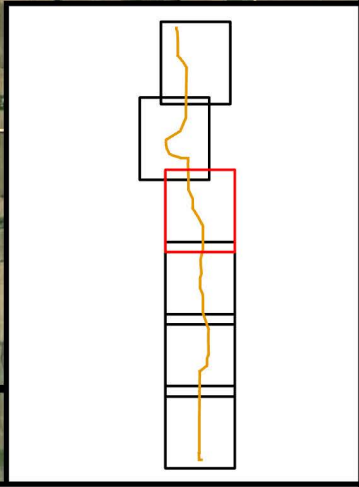
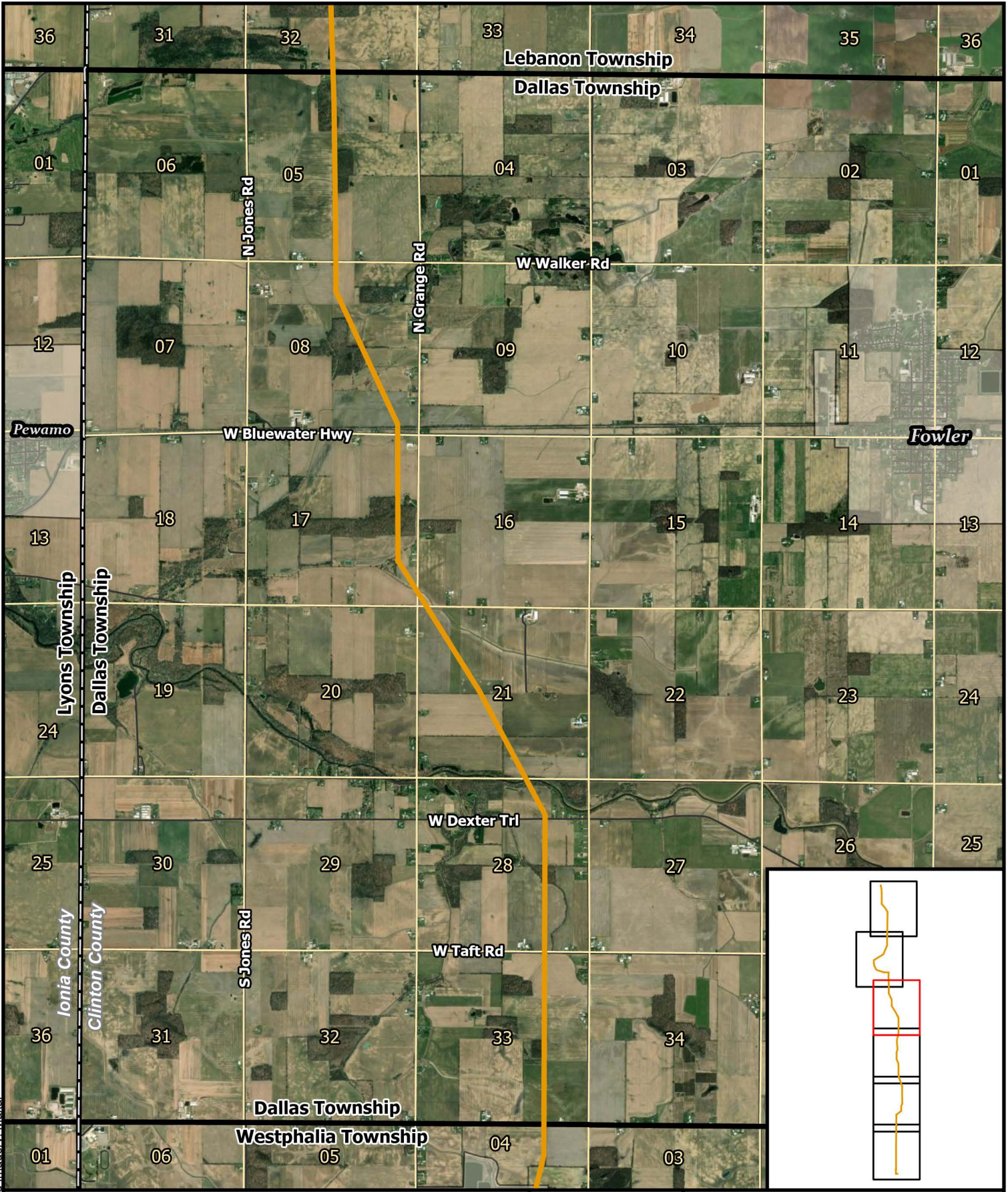
METC
 Nelson Road to Oneida
 Transmission Line
 Alternate Route
 New Haven and North Shade Township
 Gratiot County, Michigan
 Page 1 of 6






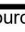


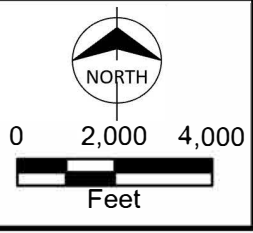
- ▲ Substation
- Alternate Route
- County
- Township Boundary
- Township Section Boundary
- Municipal Boundary



METC
 Nelson Road to Oneida
 Transmission Line
 Alternate Route
 North Plains and Lebanon Townships
 Ionia and Clinton Counties, Michigan
 Page 2 of 6

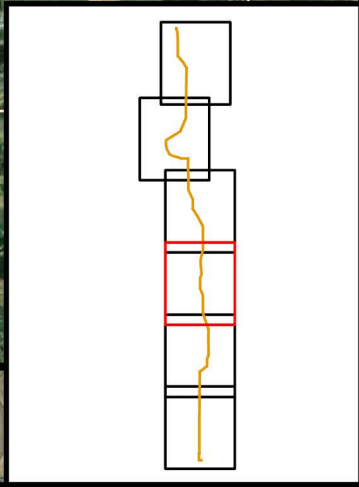
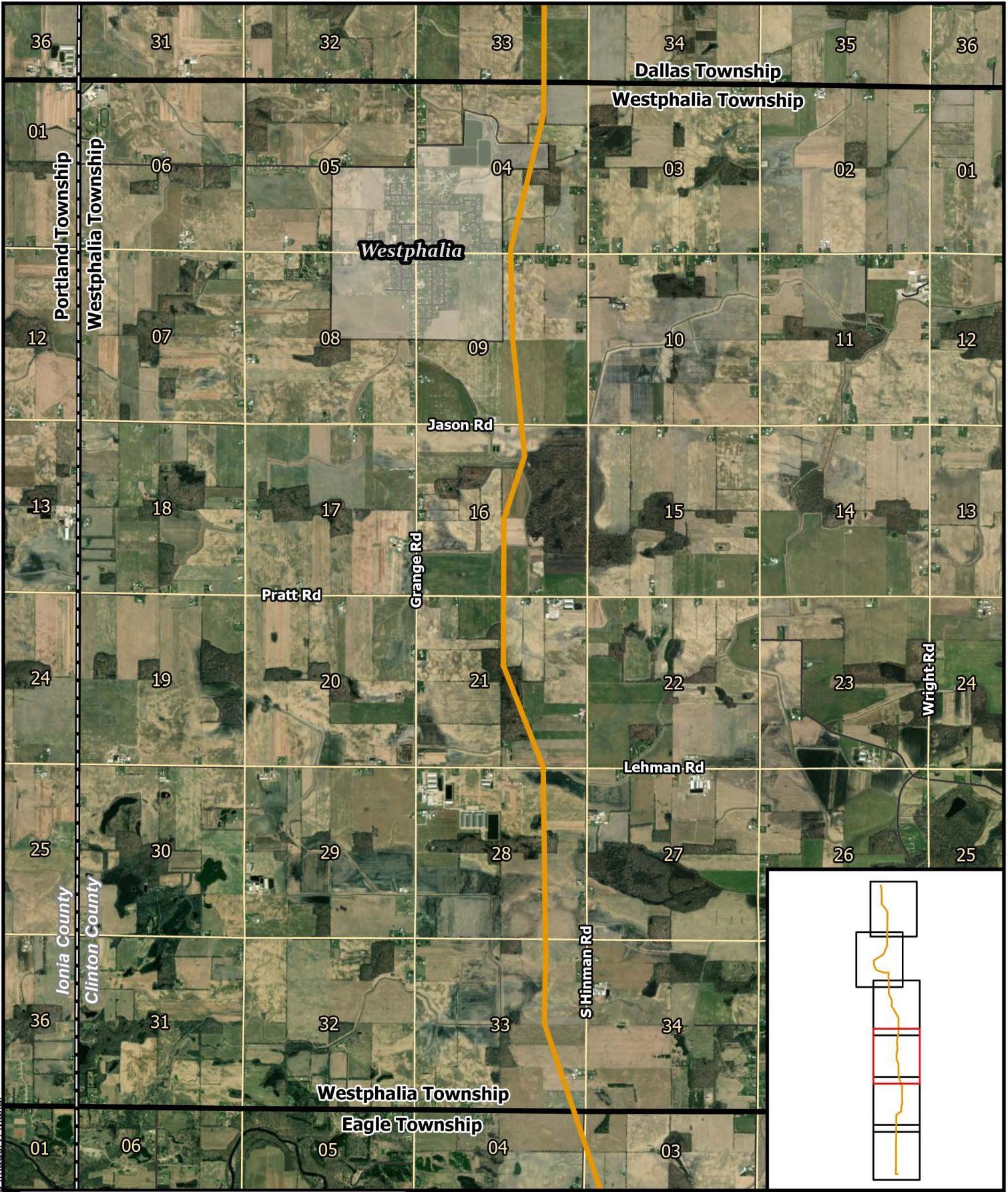


-  Substation
-  Alternate Route
-  County
-  Township Boundary
-  Township Section Boundary
-  Municipal Boundary

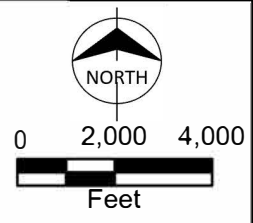


METC
 Nelson Road to Oneida
 Transmission Line
 Alternate Route
 Dallas Township
 Clinton County, Michigan
 Page 3 of 6

Path: C:\Users\gruff\OneDrive - Burns & McDonnell\Documents\ArcGIS\Projects\NelsonRd_Oneida_Figures_08032023_package_ff8335\p30\NelsonRd_Oneida_Figures_08032023.aprx gruff 8/9/2023
 Service Layer Credits: World Imagery, Maxar

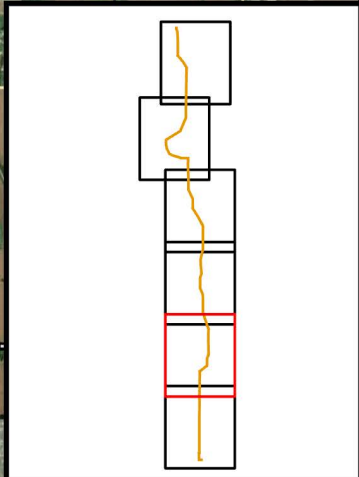
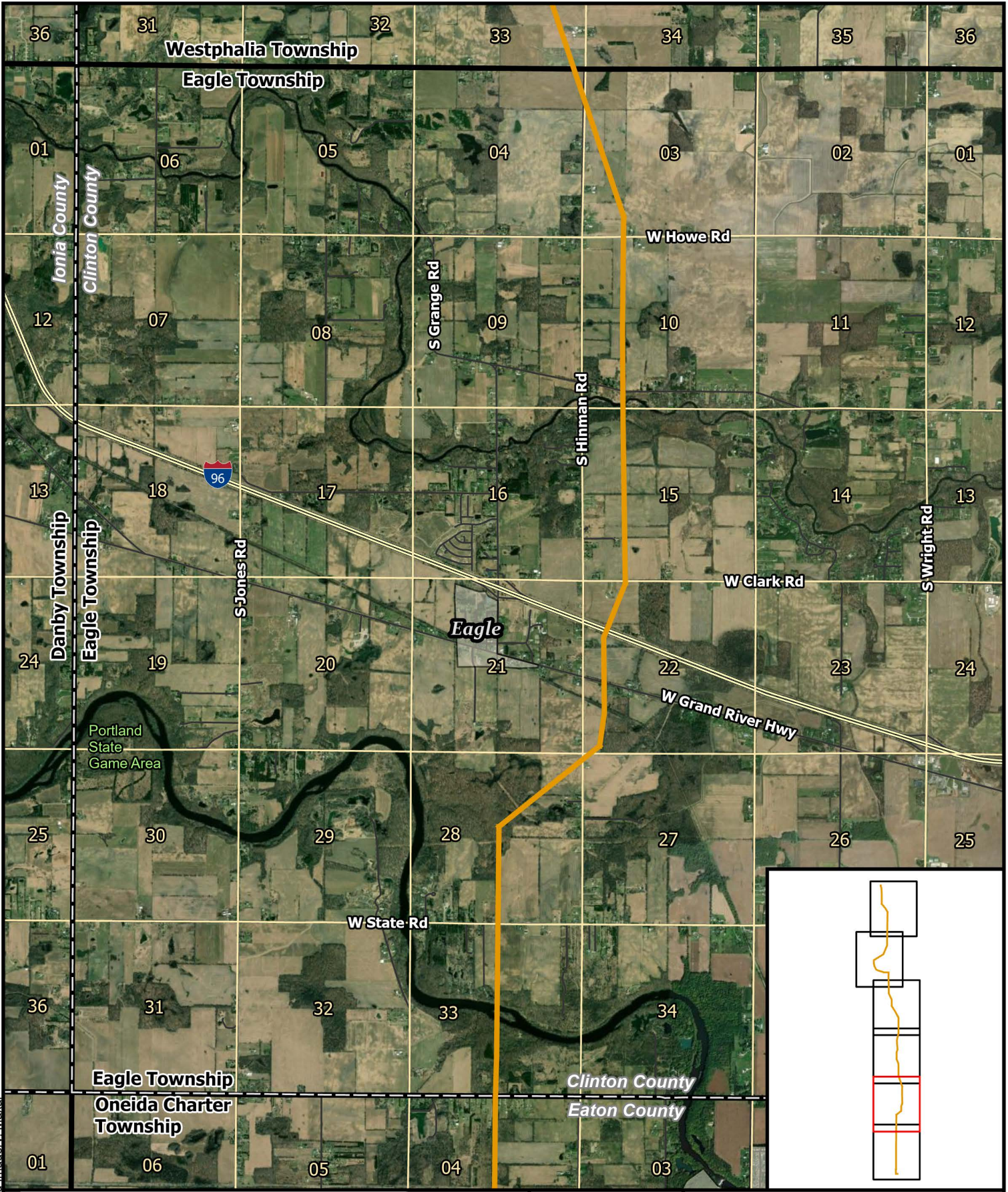







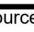
- Substation
- Alternate Route
- County
- Township Boundary
- Township Section Boundary
- Municipal Boundary

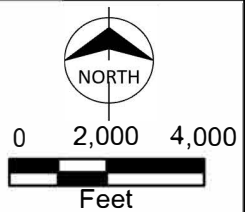


METC
 Nelson Road to Oneida
 Transmission Line
 Alternate Route
 Westphalia Township
 Clinton County, Michigan
 Page 4 of 6

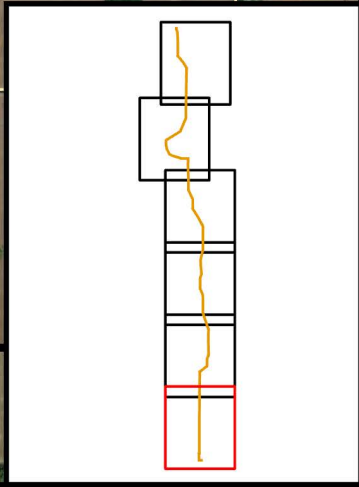
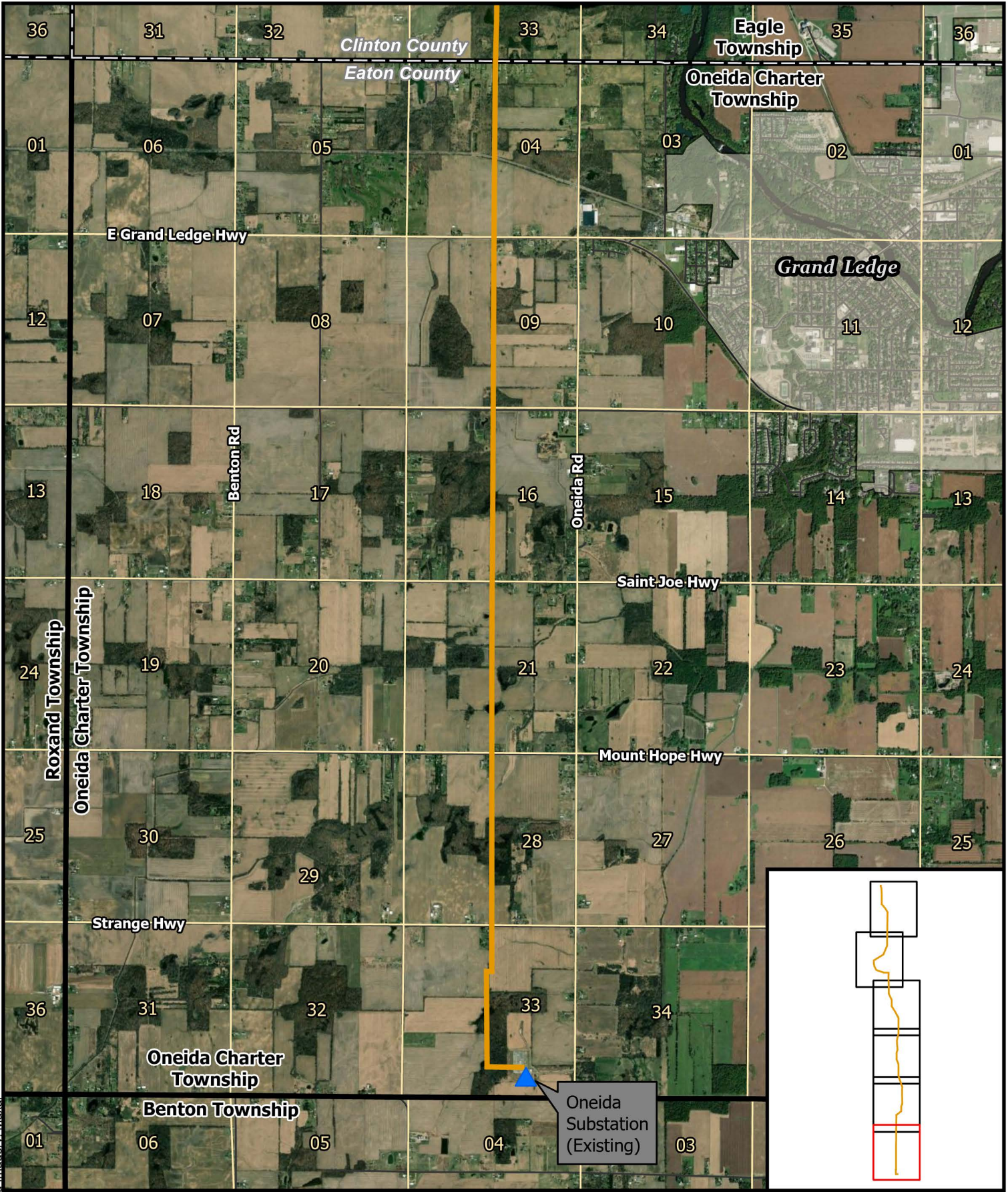
Path: C:\Users\giruff\OneDrive - Burns & McDonnell\Documents\ArcGIS\IPackages\NelsonRd_Oneida_Figures_08032023_package_ff8335\p30\NelsonRd_Oneida_Figures_08032023.aprx giruff 8/9/2023
 Service Layer Credits: World Imagery, Maxar



-  Substation
-  Alternate Route
-  County
-  Township Boundary
-  Township Section Boundary
-  Municipal Boundary



METC
 Nelson Road to Oneida
 Transmission Line
 Alternate Route
 Eagle Township
 Clinton County, Michigan
 Page 5 of 6



<ul style="list-style-type: none"> Substation Alternate Route County Township Boundary Township Section Boundary Municipal Boundary 	<p>NORTH</p> <p>0 2,000 4,000 Feet</p>	<p>BURNS MCDONNELL™</p>	<p>METC Nelson Road to Oneida Transmission Line Alternate Route Oneida Charter Township Eaton County, Michigan Page 6 of 6</p>
---	--	------------------------------------	---